



NINA VON C.

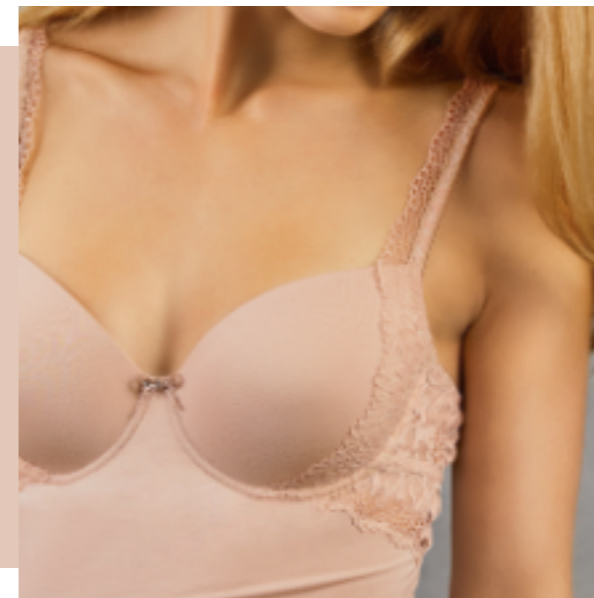
EIN TEIL VON MIR.

FASHION
AUTUMN/WINTER
2021

Titel: sieheSeite 5
Title: see page5

Diese Seite: sieheSeite 13
This page: see page 13

QUALITÄT SPÜRT
MAN, WENN MAN
NICHTS SPÜRT.

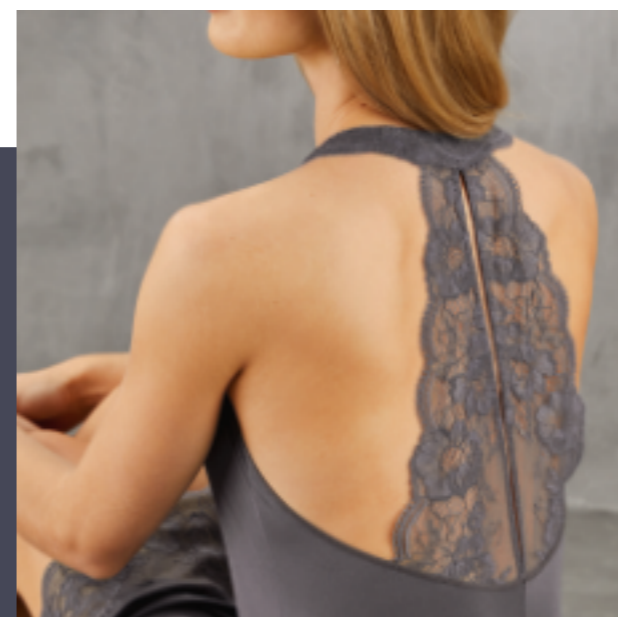


KICK OFF YOUR SHOES

and relax in ruhigen, naturnahen Farben, wundervoll weichen Materialien und ausdrucksvollen Spitzen. Träger-, Dekolté- und Rückenlösungen blitzen unter kuscheligen Strickteilen hervor.

BEAUTIFUL BURGUNDY

Sinnliche Rottöne schmeicheln jeder Frau und unterstreichen Ihre Schönheit, innovative Schnitfführungen betonen die Figur, zarte Materialien umhüllen sanft.



DANCING IN THE DARK

Quarz, ein edler Grauton, der auf glänzenden, hochwertigen Materialien besonders wertig wirkt. Üppige, luxuriöse Spitzen bieten eine perfekte Bühne für festliche Eleganz.

BH, TEILWATTIERT
BRA, PARTIALLY PADDED
 16513 8410
 75-85 B,C, 75-80 D

PANTY
PANTY
 16133 8410
 36-44



95% MODAL MODAL
 5% ELASTAN ELASTANE
 SPITZE: LACE:
 47% POLYAMID POLYAMIDE
 22% VISKOSE VISCOSE
 21% BAUMWOLLE COTTON
 10% ELASTAN ELASTANE

BODY (SCHWARZ)
BODY SUIT (BLACK)
 16560 8410
 36-46

NEGLIGÉ, LÄNGE 95CM (SCHWARZ)
NEGLIGEE, LENGTH 95CM (BLACK)
 164218410
 36-46

BH-HEMD
BRA TOP
 16360 8410
 75-90B,C,D

JAZZPANT
JAZZ PANT
 1620 8410
 36-46



HALBARM SHIRT (BLACK)
SHORTSLEEVE SHIRT (BLACK)
 16460 8410
 36-46

ACHSELHEMD
SLEEVELESS TOP
 16400 8410
 38-50

SCHALEN-BH
PADDED BRA
 165118410
 75-90A,B,C,D

schwarz 200
 black 200

make-up 646
 make-up 646

TAILLENSLIP
MAXI BRIEF
 16180 8410
 38-50

JAZZPANT
JAZZ PANT
 1620 8410
 36-46

95% MODAL
MODAL

SPITZE:
LACE:

79% POLYAMID
POLYAMIDE

5% ELASTAN
ELASTANE

21% ELASTAN
ELASTANE

ACHSELHEMD
BRA TOP
16400 840 0
38-46

BIKINI
BIKINI
1660 840 0
36-46



SPACER-BH
SPACER BRA
16527 840 0
75-90B,C,D

BIKINI
BIKINI
1660 840 0
36-46



BH-HEMDOHNE
BÜGEL
WIREFREE BRA TOP,
16362 840 0
75-85B,C, 75-80D



TOP
TOP
16410 840 0
36-44

LAMBADA
LAMBADA
1695 840 0
36-44



SOFT-BH
SOFTBRA
16501840 0
75-85 A,B,C, 75-80D

HIPSTER
HIPSTER
16130 840 0
36-44





TUNIKA
TUNIC
16670 842 0
36-48

LOUNGE PANTS
LOUNGE PANTS
99 265 844 0
36-48

DRUCK:
PRINT:
95% VISKOSE
VISCOSÉ
5% ELASTAN
ELASTAN

UNIFARBEN:
PLAIN:
95% MODAL
MODAL
5% ELASTAN
ELASTAN

BIGSHIRT3/4 ARM,
LÄNGE 80 CM
BIG SHIRT3/4 SLEEVE,
LENGTH 80 CM
99 671844 0
36-48



KICK OFF
YOUR SHOES

NIGHTSHIRT,
LÄNGE 100CM
NIGHTSHIRT,
LENGTH 100CM
99 770844 0
36-48



LANGARM SHIRT
LONG SLEEVE SHIRT
99 470 844 0
36-48

JOGGING PANTS
JOGGING PANTS
16266 842 0
36-48



schwarz 200
black 200



original 910
original 910

LONG-PULLOVER
LONG PULLOVER
27 470 1110
S-L

LEGGINGS
LEGGINGS
16260 842 0
36-48



DRUCK:
PRINT:
95% VISKOSE
VISCOSÉ
5% ELASTAN
ELASTAN

UNIFARBEN:
PLAIN:
95% MODAL
MODAL
5% ELASTAN
ELASTAN

STRICK:
KNITTED:
50% BAUMWOLLE
COTTON
50% VISKOSE
VISCOSÉ

LANGARM SHIRT
LONG SLEEVE SHIRT
16470 843 0
36-48

7/8HOSE
7/8PANTS
16262 842 0
36-48



JACKE MITSCHAL-
KRAGEN
JACKET WITH SHAWL
COLLAR
27 871 1110
S-L

TRÄGER-TOP
STRAP TOP
16410 847 0
36-46

LOUNGE PANTS
LOUNGE PANTS
16265 843 0
36-48



NIGHTSHIRT,
LÄNGE 95CM
NIGHTSHIRT,
LENGTH 95 CM
16770 843 0
36-48



champagner 510
champagner 510



schwarz 200
black 200



original 910
original 910



BH, TEILWATTIERT
BRA, PARTIALLY PADDED
 16513 845 0
 75-85A,B,C,D

JAZZPANT
JAZZ PANT
 1620 845 0
 36-46

95% MODAL
 MODAL
 5% ELASTAN
 ELASTANE

SPITZE:
 LACE: 86% POLYAMID
 POLYAMIDE

14% ELASTAN
 ELASTANE

NEGLIGÉ, LÄNGE 100CM, VORNE: SIEHE SEITE 2 (BURGUND)
 NEGLIGEE, LENGTH 100CM, FRONT: SEE PAGE 2 (BURGUNDY)
 16404 845 0
 36-50



ACHSELHEMDE
SLEEVELESS TOP
 16400 845 0
 38-50

TAILLENSLIP
MAXI BRIEF
 16160 845 0
 38-50



TRÄGERTOP
STRAP TOP
 16410 845 0
 36-44

MINISLIP
LOW-RISE BRIEF
 1650 845 0
 36-44



SCHALEN-BH
PADDED BRA
 16511 845 0
 75-90A,B,C,D

MINISLIP
LOW-RISE BRIEF
 1650 845 0
 36-44

● burgund 861
 ● burgundy 861

○ weiß 100
 ○ white 100

BEAUTIFUL
 BURGUNDY

NIGHTSHIRT, LÄNGE 90 CM
 NIGHTSHIRT, LENGTH 90 CM
 99 770 846 0
 36-48



DRUCK:
 PRINT:
 93% VISKOSE
 VISCOSE
 7% ELASTAN
 ELASTAN

UNIFARBEN:
 PLAIN:
 95% MODAL
 MODAL
 5% ELASTAN
 ELASTAN

STRICK:
 KNITTED:
 50% BAUMWOLLE
 COTTON
 50% VISKOSE
 VISCOSE

LANGARM SHIRT
 LONG SLEEVE SHIRT
 99 470 846 0
 36-48

LOUNGE PANTS
 LOUNGE PANTS
 16266 842 0
 36-48



WICKEL-PULLOVER
 WRAP PULLOVER
 27 471 1110
 S-L

TOP
 TOP
 16390 847 0
 36-46

LOUNGE PANTS
 LOUNGE PANTS
 99 265 846 0
 36-48



BIGSHIRT, LÄNGE 80 CM
 BIG SHIRT, LENGTH 80 CM
 99 670 846 0
 36-48

LEGGINGS
 LEGGINGS
 16260 842 0
 36-48

 champagner 510
 schwarz 200
 burgund 861
 original 910
 champagner 510 black 200 burgundy 861 original 910



100% MODAL MODAL SPITZE: LACE: 100% POLYAMID POLYAMIDE

NEGLIGÉ,
LÄNGE 90 CM
NEGLIGEE,
LENGTH 90 CM
897 404 849 0
36-48

KIMONO
KIMONO
897 872 849 0
36-48



BEAUTIFUL
BURGUNDY



LANGARM SHIRT
LONG SLEEVE SHIRT
897 470 849 0
36-48

LOUNGE PANTS
LOUNGE PANTS
897 265 849 0
36-48

NIGHTSHIRT, LÄNGE 90 CM
NIGHTSHIRT, LENGTH 90 CM
897 770 849 0
36-48



NEGLIGÉ, LÄNGE 120CM
NEGLIGEE, LENGTH 120CM
897 423 849 0
36-48



quarz 297
quarz 297



burgund 861
burgundy 861



SOFT-BH
SOFTBRA
 16501847 0
 75-85A,B,C, 75-80D

STRING-HIPSTER
THONG HIPSTER
 16131847 0
 36-44

95% MODAL MODAL SPITZE: 90% POLYAMID POLYAMIDE
 5% ELASTAN ELASTANE LACE: 10% ELASTAN ELASTANE

BH-TOP, OHNE BÜGEL
WIREFREE BRA TOP
 16362 847 0
 75-85B,C, 75-80D

MINISLIP
LOW-RISEBRIEF
 1650 847 0
 36-44

TRÄGERTOP
STRAP TOP
 16410 847 0
 36-46

MINISLIP
LOW-RISEBRIEF
 1650 847 0
 36-44

TOP
TOP
 16390 847 0
 36-46



NEGLIGÉ, LÄNGE 90CM
NEGLIGEE, LENGTH 90CM
 16404 847 0
 36-46

ACHSELTOP
SLEEVELESS TOP
 16400 847 0
 36-50

SCHALEN-BH
PADDED BRA
 16511847 0
 75-90A,B,C,D

quarz 297 champagner 510
 quartz 297 champagner 510

TAILLENSLIP
MAXI BRIEF
 16160 847 0
 38-50

STRING-HIPSTER
THONG HIPSTER
 16131847 0
 36-46

DANCING IN
 THE DARK

NIGHTDRESS, LÄNGE 95CM
 NIGHTDRESS, LENGTH 95CM
 16770 842 0
 36-48



DRUCK:
 PRINT:
 95% MODAL
 MODAL
 5% ELASTAN
 ELASTAN

UNIFARBEN:
 PLAIN:
 95% MODAL
 MODAL
 5% ELASTAN
 ELASTAN



NIGHTSHIRT, LÄNGE 95CM
 NIGHTSHIRT, LENGTH 95CM
 16770 848 0
 36-48

LANGARM SHIRT
 LONG SLEEVE SHIRT
 16470 848 0
 36-48

LOUNGE PANTS
 LOUNGE PANTS
 16265 842 0
 36-48



LANGARM SHIRT
 LONG SLEEVE SHIRT
 16470 842 0
 36-48

7/8PANTS
 7/8PANTS
 16262 848 0
 36-48



schwarz 200
 black 200 burgund 861
 burgundy 861 original 910
 original 910



TOP
TOP
 16410 648 0
 36-46

JAZZPANT
JAZZ PANT
 1620 648 0
 36-50

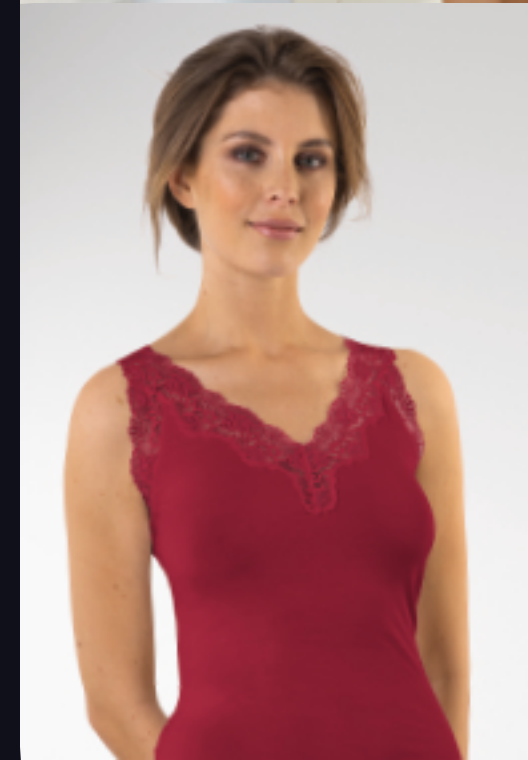
95% MODAL
 MODAL
 5% ELASTAN
 ELASTANE

SPITZE:
 LACE: 86% POLYAMID
 POLYAMIDE
 14% ELASTAN
 ELASTANE

NEGLIGÉ,
 LÄNGE 90 CM
NEGLIGEE,
LENGTH 90 CM
 16421648 0
 36-46



ACHSELHEMD
SLEEVELESS
TOP
 16400 648 0
 36-50



SCHALEN-BH
PADDED UNDERWIRE BRA
 16511648 0
 75-90 A, 70-90 B,C,D

TAILLENSLIP
MAXI BRIEF
 16160 648 0
 36-50

SOFT-BH
SOFTBRA
 16501648 0
 70-90A,B, 70-85C,
 70-80 D

HIPSTER
HIPSTER
 16133 648 0
 36-46



weiß 100
 white 100

burgund 861
 burgundy 861



SPACER-BH
SPACER CUP BRA
48 527 9710
75-95B,C, 75-90D, 75-85E

STRING
THONG
48 1019710
36-44



NEGLIGÉ,
LÄNGE 90CM
NEGLIGEE,
LENGTH 90CM
48 422 9710
36-46



BH-HEMD MIT
SPACER CUPS
BRA TOP WITH
SPACER CUPS
48 377 9710
75-95B,C, 75-90D,
75-85 E

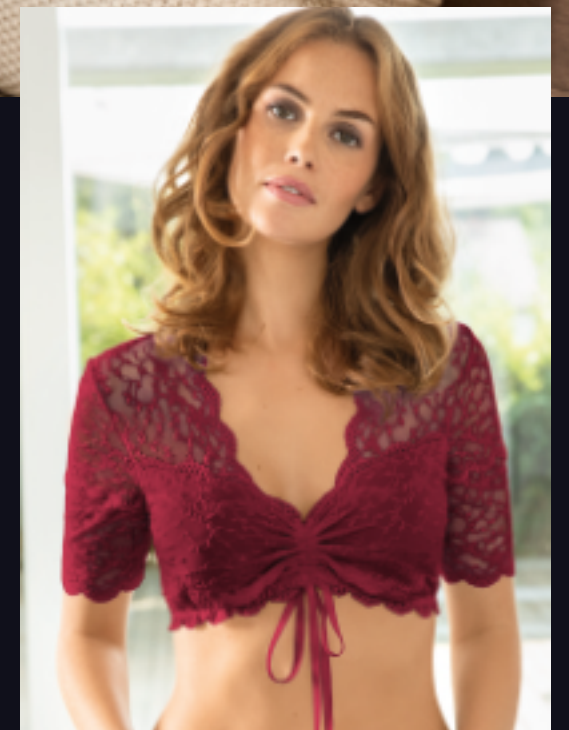


BÜGEL-BH
UNDERWIRE BRA
48 512 9710
75-90B,C,D, 75-85E



BALCONNET-/DIRNDL-BH
DECOLLETE BRA
48 515 9710
70-95 A, 70-100B,C,D
70-95 E, 70-90 F, 70-85 G

PANTY
PANTY
48 130 9710
36-44



DIRNDL-BLUSE
HALBARM
DIRNDL BLOUSE
SHORTSLEEVE
48 463 9710
32-44

86% POLYAMID
POLYAMIDE

SPITZE:
LACE: 86% POLYAMID
POLYAMIDE

14% ELASTAN
ELASTANE

14% ELASTAN
ELASTANE

JAZZPANT
JAZZ PANT
48 219710
36-50



weiß 100
white 100



schwarz 200
black 200



champagner 510
champagne 510



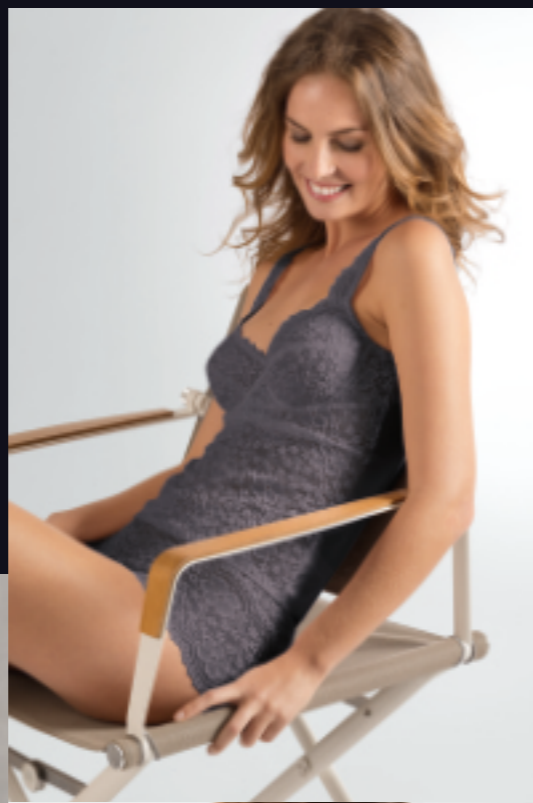
burgund 861
burgundy 861

52% VISKOSE
VISCOSE
40% MODAL
MODAL
8% ELASTAN
ELASTANE

SPITZE: 85% POLYAMID
LACE: POLYAMIDE
15% ELASTAN
ELASTANE

TAILLENSLIP
MAXIBRIEF
49 160444 0
38-48

WICKEL-PULLOVER
(SIEHE SEITE 14)
WRAP PULLOVER
(SEE PAGE 14)



BH-HEMD
UNDERWIRE BRA
TOP
49 360 444 0
75-90 B,C,D

HIPSTER
HIPSTER
49 133444 0
36-46



TRÄGERTOP
STRAP TOP
49 410444 0
38-46

JAZZPANT
JAZZ PANT
49 20 444 0
36-46

52% VISKOSE
VISCOSE
40% MODAL
MODAL
8% ELASTAN
ELASTANE

SPAGHETTI-TOP
SPAGHETTI STRAP
TOP
49 410 1110
36-46

JAZZPANT
JAZZ PANT
49 20 1110
36-46



TOP MIT
STEHKRAGEN
TOP TURTLE
NECK
49 3911110
36-46



ACHSELTOP
SLEEVELESS TOP
49 400 1110
36-50

TAILLENSLIP
MAXIBRIEF
49 160 1110
38-50



weiß 100
white 100

schwarz 200
black 200

champagner 510
champagne 510

latte macchiato 655 (Hipster nicht)
latte macchiato 655 (hipster not)

quarz 297
quartz 297

weiß 100
white 100

schwarz 200
black 200

quarz 297
quartz 297

champagner 510
champagne 510

latte macchiato 655
latte macchiato 655

95% MODAL
MODAL

5% ELASTAN
ELASTANE

TRÄGERTOP

STRAP TOP

88 310 1110
38-46

HÜFTSLIP

WAISTBRIEF

88 70 1110
38-46



ACHSELHEMD

SHORTSLEEVE SHIRT

88 300 1110
38-46

JAZZPANT

JAZZ PANT

88 20 1110
38-46



HALBARM SHIRT
SHORTSLEEVE SHIRT

88 460 1110
38-46

LEGGINGS
LEGGINGS

88 260 1110
38-50

100% BAUMWOLLE
COTTON

ACHSELHEMD

SLEEVELESS TOP

77 302 1140
36-50

HÜFTSLIP

WAISTBRIEF

77 70 1110
38-50



TRÄGERHEMD

STRAP TOP

77 310 1140
36-46

JAZZPANT

JAZZ PANT

77 20 1110
36-46



weiß 100
white 100



schwarz 200
black 200



burgund 861
burgundy 861



weiß 100
white 100



schwarz 200
black 200



champagner 510
champagne 510



nude 636
nude 636



nachtblau 742
night blue 742



burgund 861
burgundy 861

100% BAUMWOLLE, SUPERGEKÄMMT
COTTON, SUPER COMBED



100% BAUMWOLLE, SUPERGEKÄMMT
COTTON, SUPER COMBED



ACHSELHEMD
SLEEVELESS TOP
70 300 223 0
38-50

JAZZ PANT
JAZZ PANT
70 20 222 0
38-46



HEMD
TOP
70 380 225 0
38-46

TRÄGERHEMD
STRAP TOP
70 310 224 0
38-46

HEMD MIT
MITTELTRÄGER
MIDDLE-STRAP TOP
70 350 221 0
38-46

TAILLENSLIP
MAXI BRIEF
70 160 219 0
38-50

ACHSELHEMD
SLEEVELESS TOP
70 300 220 0
38-50



HEMD
TOP
70 300 499 0
38-50

TAILLENSLIP
MAXI BRIEF
70 160 499 0
38-50



weiß 100
white 100



weiß 100
white 100



schwarz 200
black 200



champagner 510
champagne 510



nachtblau 742
night blue 742



burgund 861
burgundy 861



HALBARM SHIRT
SHORTSLEEVE SHIRT
29 460 846 0
36-46

RADLER
RADLER PANTS
29 220 846 0
36-46



LANGARM SHIRT
LONG SLEEVE SHIRT
29 470 846 0
36-46

LEGGINGS
LEGGINGS
29 260 1110
36-46

70% MERINO-WOLLE
MERINO WOOL

30% SEIDE
SILK

ACHSELTOP
SLEEVELESS TOP
29 300 846 0
36-46

BIKINISLIP
BIKINI BRIEF
29 60 846 0
36-46



HALBARM SHIRT
SHORTSLEEVE SHIRT
29 460 846 0
36-46

PAGENSLIP
UNDERWEAR PANTS
29 120 846 0
36-46

schwarz 200
black 200

champagner 510
champagne 510

quarz 297
quarz 297



SPAGHETTI-TOP
SPAGHETTI STRAP TOP
60 410 420 0
36-46

MINISLIP
LOW-RISEBRIEF
60 50 420 0
36-46



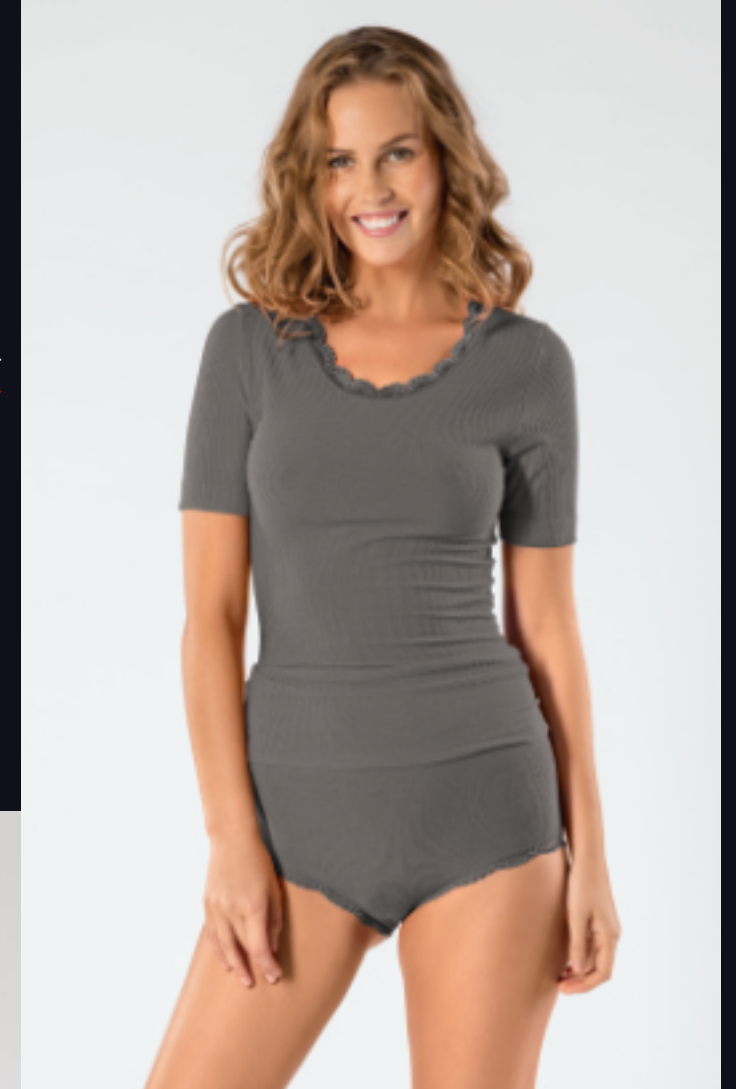
ACHSELTOP
SLEEVELESS TOP
60 401 420 0
36-46

HÜFTSLIP
WAISTBRIEF
60 70 420 0
38-46

95% MODAL
MODAL
5% ELASTAN
ELASTANE

HALBARM SHIRT
SHORTSLEEVE SHIRT
60 461 420 0
36-46

MINI-HIPSTER
MINI HIPSTER
60 133 420 0
36-46



HALBARM SHIRT
SHORTSLEEVE SHIRT
60 461 420 0
36-46

LEGGINGS
LEGGINGS
60 260 420 0
36-46



weiß 100
white 100



schwarz 200
black 200



anthrazit-melange 242
anthrazit melange 242

BASIC SLIPS IN MODEFARBEN

BASIC PANTIES IN FASHION COLORS

93% BAUMWOLLE COTTON
 7% ELASTAN ELASTANE
 SPITZE: LACE:
 86% POLYAMID POLYAMIDE
 14% ELASTAN ELASTANE
 1STÜCK IN BURGUND
 1PIECE IN BURGUNDY



HIPSTER
HIPSTER
 40 130880 0
 36-46



MINISLIP
LOW-RISEBRIEF
 40 50 880 0
 36-46



HÜFTSLIP
WAISTBRIEF
 40 70 880 0
 38-46



TAILLENSLIP
MAXI BRIEF
 40 160880 0
 38-50

quarz 297
 quarz 297
 burgund 861
 burgundy 861

95% MODAL MODAL
 5% ELASTAN ELASTANE

3ER PACK MITSTITCHCARD, PRO FARBE (QUARZ ODER BURGUND)
 3 PIECES WITH A STITCHCARD, PER COLOR (QUARZ OR BURGUNDY)



JAZZPANT
JAZZ PANT
 1620 584 99
 36-46

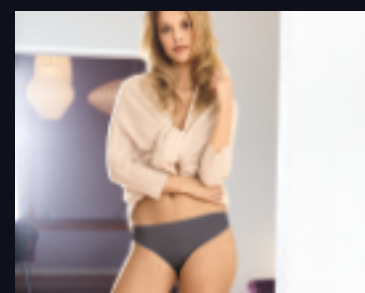


TAILLENSLIP
MAXI BRIEF
 16160 584 99
 36-50

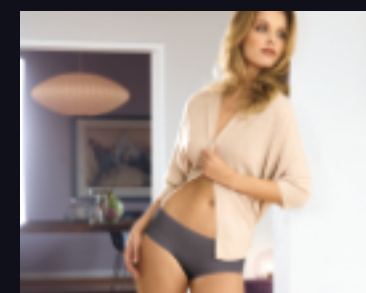


66% POLYAMID POLYAMIDE
 34% ELASTAN ELASTANE

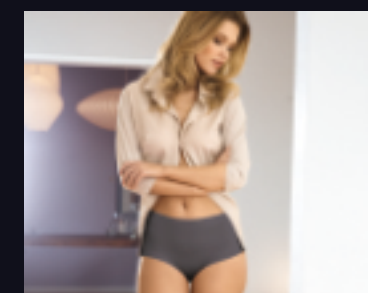
2 STÜCK AUF BÜGEL MITSTITCHCARD (IN QUARZ)
 2 PIECES ON A HANGER WITH A STITCHCARD (IN QUARZ)



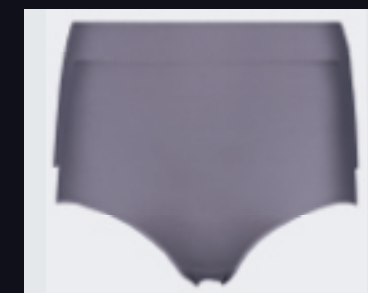
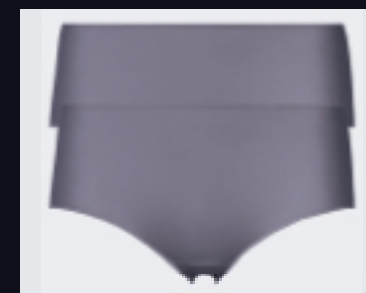
JAZZPANT
JAZZ PANT
 65 20 11299
 36-46



HIPSTER
HIPSTER
 65 130 11299
 36-46



TAILLENSLIP
MAXI BRIEF
 65 160 11299
 36-48



WERBEMITTEL ADVERTISING MATERIALS

Aus jedem Modethema wird ein Poster angeboten, z.B.:
For every fashion line will be offered a suitable poster, e.g.:

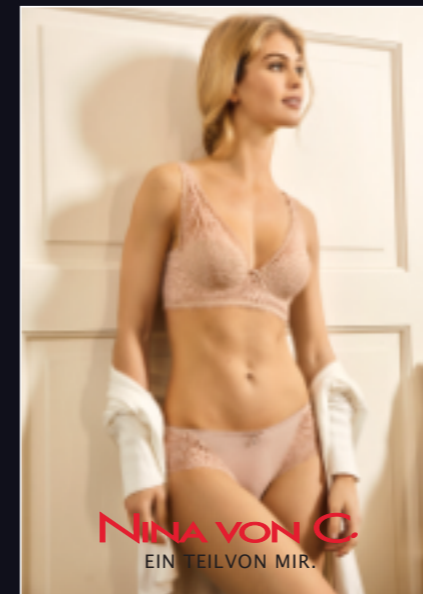


9-1-15 Imageplakat H/W 21
Image poster A/W 21



Bügel für Loungewear
Hangers for Loungewear

Kleiderbügel
Hangers



9-1-16 Kollektionsplakat 1
Collection poster 1



9-1-17 Kollektionsplakat 2
Collection poster 2



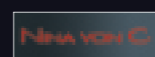
9-1-18 Kollektionsplakat 3
Collection poster 3



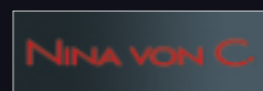
1-8 Tragetasche
Carrier bags



1-23 Plexi-Aufsteller
plexi-glas display



1-19



1-26

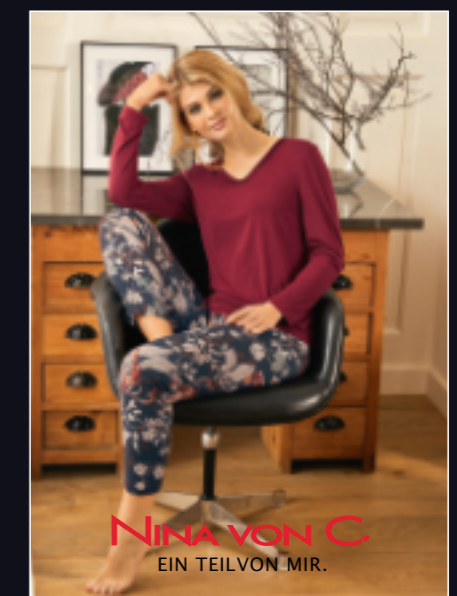
Logo-Aufkleber transparent, zwei Größen
Transparent, logo sticker, two sizes



9-1-19 Kollektionsplakat 4
Collection poster 4



9-1-20 Kollektionsplakat 5
Collection poster 5



9-1-21 Kollektionsplakat 6
Collection poster 6

CORPORATE MANAGEMENT

Doris Biedermann
Martina Bandte
Matthias Conzelmann

SALES MANAGEMENT

Peter Lübbe

KEY ACCOUNT MANAGEMENT

Mijo Roscic

EXPORT MANAGEMENT

USA, CDN, MEX, South America,
Africa, South Asia, J, ROK, AUS, NZ,
IS, N, SF, DK, GB, IRL, CZ, SK
Ulrich Karl Conzelmann
E-Mail uconzelmann@conzelmann.de

EXPORT FRANCE

Pascale Müller
E-Mail pmueller@conzelmann.de

CUSTOMER SERVICE

Gabriele Beck
Julia Eppler
Andreas Nill
Elvira Vogt

**SALES REPRESENTATIVES
GERMANY**

Kristian Schulz
Buckower Damm 5a
12349 Berlin
Tel. 030 60081117
Fax 030 60975148
Mobil 0172 3241600
E-Mail kristianschulz@gmx.net

Jörn Niemann
An den Gildewiesen 10
19258 Boizenburg
Mobil 015112131186
jniemann@conzelmann.de

Caspar Schruck
Dahlerdyk 166a
47803 Krefeld
Tel. 021517843857
Fax 021517843858
Mobil 01511266698
E-Mail cschruck@conzelmann.de

Raimund Weißbrodt
Heidenkopferdell 61
66123 Saarbrücken
Tel.+Fax 068166347
Mobil 0172 9510147
E-Mail raimund-weissbrodt@t-online.de

Sebastian Speidel
Sonnenhalde 16
72808 Lichtenstein
Mobil 015157606750
E-Mail sspeidel@conzelmann.de
Order office Sindelfingen
House IV, 9. Level
Mahdentalstraße 114
71065 Sindelfingen
Appointments after arrangement
by telephone.

Laszlo Pilz
Madeleine-Ruoff-Straße 46
82211 Herrsching
Fax 08152 399249
Mobil 01715567007
E-Mail pilz.ninavonc@gmail.com
Order office Munich (MTC-Center)
House I, Room 035
Taunusstr. 45
80807 München
Appointments after arrangement
by telephone.

Karoline Krahn
Seeweg 66A
97204 Höchberg
Tel. 093132066384
Fax 093132066385
Mobil 01712608584
E-Mail info@krahn-fashion.de

**SALES REPRESENTATIVES
WORLDWIDE**

AUSTRALIA
Doris Jablonsky
6, Doolan Court
Noosaville, QLD, 4566
Mobil +61414 230211
E-Mail doris@fashnsplash.com

AUSTRIA
Gustav Kern
Obermayrstraße 21
A-4060 Leonding
Mobil +43 699 17072213
Fax +43 732 682512
E-Mail gustav.kern@aon.at

CANADA
Tuula Keighley
2096 Kempton Park Drive
Mississauga, ONT, L5M 2Y9
Tel. +1(905) 6073160
Fax +1(905) 6073316

CZECH REPUBLIC + SLOWAKIA

T.O.A.s.r.o.
Norbert Jesiolowski
A. Bernolaka 56
01001 Zilina

**FRANCE (ALSACE-LORRAINE) +
LUXEMBOURG**
Patrick Landmann
21, Place de l'Esplanade
F-67000 Strasbourg
Tel. +33388 452032
Fax +33388 615067
E-Mail patrick.landmann404@orange.fr

For other regions of France please
contact Mrs. Müller

ITALY
Spiss Waldthaler KG
Buozzistraße 12
I-39100 Bozen
Tel. +390471502366
Fax +390471502351
E-Mail spiss@spiss.it

POLAND
Handlowa ADA
Andrzej Pieniak
Ul. Sloneczna 2
05-270 Marki
Tel. +48 501151899
E-Mail andrzej.pieniak1@gmail.com
Web www.galeriabelizny.pl

RUSSIA + CIS + BALTIC STATES

ES marketing & sales UG
Werner-von-Siemens-Straße 6
86159 Augsburg
Tel. 082144978450
Fax 082144978455
Mobil 015127001607
E-Mail esabudko@conzelmann.de

SCANDINAVIA

JD Textile
Ivan Jensen
Sportsvaenget 32
7330 Brande
Danmark
Tel. +45 96420245
Mobil +45 20822452
E-Mail mail@jd-textile.dk

SWITZERLAND

JANA dessous
Peter Thum
Jakob-Nufer-Straße 1
CH-8573 Siegershausen
Tel. +41716970660
Fax +41716970664
Mobil +4179 6591045
E-Mail jana-dessous@bluewin.ch

Viana AG
Reiherweg 1
CH-9472 Grabs
Tel. +41817712233
Fax +41817712349

THE NETHERLANDS + BELGIUM

Henk Nieuwland Agenturen
Stadskade 170
7311XV Apeldoorn
Tel. +31622 204470
E-Mail henknieuwlandagenturen@gmail.com
Showroom C4.14 in the Cube Centre in Almere

NINA VON C.

Karl Conzelmann GmbH + Co. KG · Kleine Straße 12 · 72461 Albstadt
Tel. 07432 704-0 · Fax 07432 704-48/-54 · E-mail: info@conzelmann.de
www.ninavonc.de