

BASICS

AUTUMN/WINTER 2023

NINA VON C.

A PART OF ME.

Article on Titel: see page 22
Article this page: see page 38

QUALITY IS A MATTER
OF TRADITION.

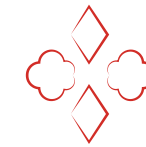


LOUNGEWEAR · LOUNGEWEAR (Series 16)



MICROFIBRE

· SECRET (Series 15)
· SECRET SHAPE (Series 98)
· SECRET SOFT (Series 91)
· ECO SOFT (Series 25)



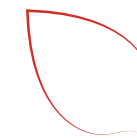
COTTON
BLENDS

· COTTON SHAPE (Series 45)



SILK BLENDS

· WOOL SILK (Series 29)



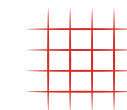
MICRO-MODAL

· PLEASURE (Series 16)
· COSY (Series 16)
· ROMANCE (Series 16)
· BODY & SOUL (Series 60)
· PURE (Series 49)
· MOTION (Series 88)



LACES

· SILVER EDITION (Series 48)
· MILLEFLEURS (Series 49)



VISCOSE
BLENDS

· ELEGANCE (Series 22)



COTTON
COTTON BLENDS

· FINE COTTON (Series 70)
· DAILY (Series 77)
· SIMPLY (Series 74)



PANTIES

· MULTIPLE PACKS
· SLIPPOINT
· SLIPBOUTIQUE

SUSTAINABILITY



RESPONSIBILITY

We have been designing and producing the finest lingerie and underwear at the heart of the Swabian Alb since 1920. Karl Conzelmann is still a family owned business since 3 generations, with 120 employees in Albstadt Germany. Also, we own and manage our own production companies in Portugal and Romania. We strongly value sustainable thinking and take it to action in all aspects of our business, in order to protect resources for subsequent generations.

RAW MATERIALS

85% of all fabrics processed in our company are knitted in our own knitting department – here in Albstadt. Our main focus is on the quality and sustainability of the yarns we use, mainly cotton yarns and organic yarns.

• ORGANIC COTTON

The cultivation of organic cotton, protects the environment, prevents soil contamination and reduces water consumption to a minimum. Also, the use of chemicals is highly restricted and must comply with the basic requirements for biodegradability. Safe and hygienic working conditions, a minimum wage, no discrimination and no child labour are the basis for fair social and environmental standards. The GOTS standard we use guarantees sustainable manufacturing of textiles.



• MODAL TENCEL™

The TENCEL™ modal fibers are produced in-house at the Lenzing site in Austria in their own cellulose and fiber production under particularly strict, environmentally conscious requirements. The fibers come directly from the renewable raw material wood of native forests or from certified plantations. The used water is cleaned and reused, electricity is mainly obtained from bioenergy. Cellulose is the most widespread, renewable and organic material.



• RECYCLED POLYAMIDE

Fiber residues from the textile industry are processed into a polymer and then spun into new fibres. The result is a soft, comfortable material which we process into our "ecosoft" series. By recycling fiber residues, 39% water and 45% CO₂ are saved under the production process.



• VISCOSE

Viscose is also based on cellulose, which is obtained from wood. ENKA® processes FSC® certified cellulose from a Swedish biorefinery. The wood required for this process originates from 100% local, legal and sustainable reforestations in Sweden, Finland, Estonia and Scotland. The independent organisation Fairtrade International selected ENKA® viscose as a "Responsible Fibre". ENKA® strives for a most sustainable use of resources within a difficult and competitive global environment.



• OEKO-TEX®

All our articles are certified according to the OEKO-TEX® STANDARD 100 (including all articles which are not produced from cotton). This standard ensures that all our products are safe and compliant with the standard.



RESOURCE CONSERVATION AND ENVIRONMENTAL PROTECTION

• CLIMATE NEUTRAL SHIPPING

All our shipments to customers are shipped as climate-neutral.

• BEE HIVES

Our 15 beehives support an intact environment and agriculture in our area..

• PHOTOVOLTAIC

We have been producing 192.120 kW of electricity per year on average since using our photovoltaic roof-installations. This translates to a CO₂ saving of about 101 tons per year.

• PRINTED MATERIALS

Our printed materials are printed at a local printing company, which has set the entire production process on the basis of sustainability. All products are produced without health-hazardous material. In order to reduce the CO₂ footprint to a minimum, our print supplier sources all production materials within a radius of 150 km. >> 100% LOCAL, Fink Printing Press in Pfullingen.

• PACKAGING

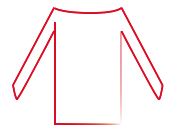
The polybags, which we usually use are slowly being reduced both in strength and in number. Various article groups will be switched from single poly packaging to bundles of three held together by a paperband.

• HEAT RECOVERY

We require a lot of compressed air for knitting, cutting and sewing. A lot of heat incurs in the production of compressed air, the majority of which we feed back into our heating circulation. We hereby significantly reduce our CO₂ consumption for heating our buildings.

• HANGER RECYCLING

Our plastic hangers are collected from our customers after use and are then sorted and newly packaged by "Lebenshilfe Zollernalb". In this way, the hangers can be reused or go into a recycling process.



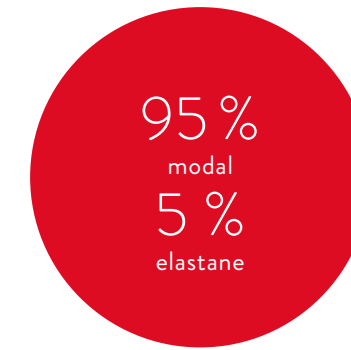
LOUNGEWEAR MODAL

- wonderfully soft and cosy modal
- with a silky shine
- sustainable modal made of renewable beechwood
- climatizing and moisture absorbing
- perfectly comfortable
- many mix-and-match options with the fashion loungewear series

PACKAGING:
1 piece with NINA-hangtag



MADE IN EUROPE



SHORT SLEEVE SHIRT
16 460 874 0
36-48

JOGGING PANTS
16 266 874 0
36-48



LONG SLEEVE SHIRT
16 470 874 0
36-48



LONG SLEEVE SHIRT
16 470 874 0
36-48



SHORT SLEEVE SHIRT
16 460 874 0
36-48



SHORT SLEEVE SHIRT
16 460 874 0
36-48

JOGGING PANTS
16 266 874 0
36-48

LOUNGE PANTS
16 265 874 0
36-48

7/8 LEGGINGS
16 261 874 0
36-48

3/4 PANTS
16 263 874 0
36-48



TOP
16 400 874 0
36-48

BERMUDA
16 250 874 0
36-48



black 200



SECRET

- wonderfully soft microfibre - invisible, soft comfort
- uncomplicated, soft, hugging and smooth
- underwire bra-top with tulle lining at side and back parts ensures a perfect fit

PACKAGING:
1 piece with NINA-hangtag
SELLING UNIT:
3 pieces per size



MADE IN EUROPE

95%
polyamide (micro-polyamide)
5%
elastane

MICROFIBRE



HIPSTER
15 130 112 0
36-44



LOW-RISE BRIEF
15 55 112 0
36-44



THONG
15 100 112 0
36-44



SHORTS
15 136 112 0
36-44



HIPSTER
15 130 112 0
36-44



JAZZ PANT
15 20 112 0
36-46



MAXI BRIEF
15 160 112 0
38-48



SLEEVELESS TOP
15 405 112 0
36-46



UNDERWIRE BRA TOP WITH FOAM CUPS
15 361 112 0
75-85A, 75-90B,C



white 100



black 200



champagne 510



caramel 635



SECRET SOFT & SHAPE

Secret Soft

- superfine, soft and elastic microfibre
- briefs with laser cut edges are absolutely invisible and seamless
- care labeling by transfer printing (label free)

Secret Shape

- back parts of the soft-bra and the bra-top with strong powernet lining guarantee a perfect fit
- Outerwear falls well over the smooth surface of the fabric

PACKAGING:

1 piece in a plastic bag with NINA-hangtag



MADE IN EUROPE

(except wire free molded bra)

91:
86 % micro-polyamide,
14 % elastane

98:
85 % micro-polyamide,
15 % elastane



HIPSTER
91 133 113 0
S-L



THONG
91 100 113 0
S-L



LOW-RISE BRIEF
91 50 113 0
S-L



SHORTS
91 130 113 0
S-L



MAXI BRIEF
91 160 113 0
S-XL



LONG PANTS
91 220 113 0
S-XL



LEGGINGS
91 260 113 0
S-XL
(only in black 200)



WIREFREE MOLDED BRA
98 520 112 0
75-90A,B,C



UNDERWIRE BRA TOP
98 360 112 0
75-90B,C,D



white 100



black 200



caramel 635



champagne 510
(only bra + top)



ECO SOFT

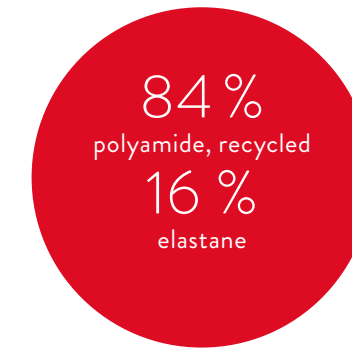
- Fabric and mesh are made from recycled polyamide, which consists exclusively of fiber remnants from the textile industry
- The reduced use of raw materials avoids industrial waste, 45% less CO₂ emissions and 39% less water consumption during the production
- The very soft and smooth material ensures an optimal fit and comfort
- Care labelling of briefs and top by transfer printing (label free)
- Top is doubled at the front and can be worn as outerwear
- Hidden seams of soft bra and top result in a clean look and no lines under tight clothing

PACKAGING:
1 piece with NINA-hangtag +
ecosoft-hangtag

ecosoft



MADE IN EUROPE



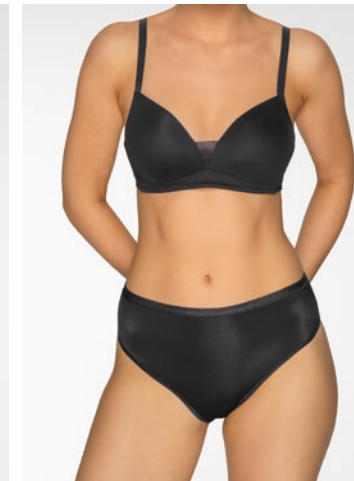
TOP
25 400 111 0
36-50

JAZZ PANT
25 20 111 0
36-46



TOP
25 400 111 0
36-50

JAZZ PANT
25 20 111 0
36-46



WIREFREE SOFT BRA
25 501 111 0
75-85 A,B,C

MAXI BRIEF
25 160 111 0
38-50



BUSTIER
25 520 111 0
75-85 A,B,C,D

JAZZ PANT
25 20 111 0
36-46



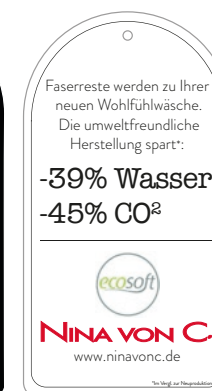
BALCONNET BRA, MULTIFUNCTIONAL
25 514 111 0
75-90 A,
70-90 B,C,D



FABRIC MADE IN EUROPE



ecosoft-hangtag



white 100



black 200



nude 636



COTTON SHAPE

- Cotton Shape gives you sleek, smooth and exciting curves - though it is comfortable
- perfect shape wear for everyday, due to its high content of cotton
- extra skinfriendly because of cotton
- very flat seams and edges
- special styling with stronger shaping areas around the waist and stomach
- wellness bra for soft support during all activities on low-impact level
- double-layered, molded cups, large, padded shoulder-straps and a super-soft elastic guarantee a perfect fit and comfort

PACKAGING:

1 piece in a plasticbag with NINA-hangtag + Cotton Shape-hangtag



MADE IN EUROPE

82 % cotton,
18 % elastane

Tüll (45...951):
54 % polyamide,
46 % elastane



WELLNESS BRA
45 520 112 0
75-95B,C,D 75-90E

SHAPING BRIEF
45 160 112 0
36-50



WELLNESS BRA
45 520 112 0
75-95B,C,D 75-90E



SHAPE SHIRT
45 400 112 0
38-46



SHAPING SHORTS
45 220 112 0
36-50

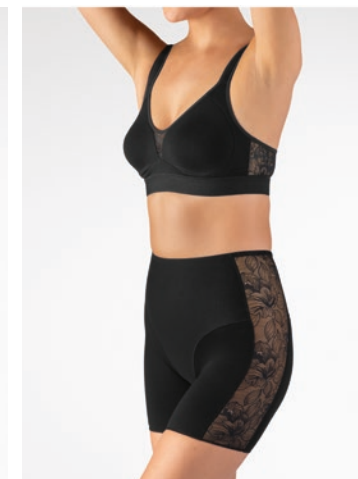


SHAPING HIGH WAIST BRIEF
45 181 112 0
36-46

SHAPING BRIEF
45 160 112 0
36-50



COMFORT BRA
45 520 951 0
75-95B,C,D 75-90E



COMFORT BRA
45 520 951 0
75-95B,C,D 75-90E



MAXI BRIEF
45 160 951 0
36-50



TOP
45 400 951 0
36-46

MAXI BRIEF HIGH
45 180 951 0
36-46

SHORTS
45 120 951 0
36-50



white 100
(all except: long pants +
high waist)



black 200



caramel 635



WOOL SILK

- luxurious, precious fabric made of silk and wool
- cosy and soft on the skin, with a decorative, shiny lace
- climatising properties: keeps you warm in the cold; cool and fresh in the heat
- without side seams (except leggings)
- even without elastane highly elastic
- flat, highly elastic hem

PACKAGING:

1 piece in a plastic bag with NINA-hangtag + Wool Silk-hangtag



FABRIC MADE IN GERMANY
MANUFACTURED IN EUROPE



LONG SLEEVE SHIRT

29 470 846 0
36-46

LEGGINGS

29 260 111 0
36-46



LONG SLEEVE SHIRT

29 470 846 0
36-46

LEGGINGS

29 260 111 0
36-46



SHORT SLEEVE SHIRT

29 460 846 0
36-46

SHORTS

29 120 846 0
36-46



SHORT SLEEVE SHIRT

29 460 846 0
36-46

LONG PANTS

29 220 846 0
36-46



SLEEVELESS TOP

29 300 846 0
36-46



black 200



champagne 510



PLEASURE

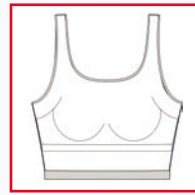
- soft and stretchy powernet trimmings, high comfort
- perfect fit due to light spandex content
- no visible panty line due to special workmanship of trimmings
- modal: highly sustainable fibre of natural origin
- tops with in-built soft foam cups
- maxi brief with a light support at the belly
- soft-bra with low cut back part

PACKAGING:

1 piece in a plastic bag with NINA-hangtag



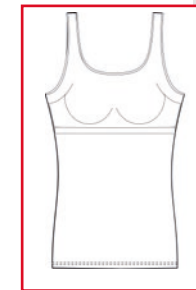
95 %
modal (micro-modal®)
5 %
elastane



WITH INSIDE
BUSTIER

BUSTIER
16 520 111 0
36-44

JAZZ PANT
16 20 111 0
36-46



WITH INSIDE
BUSTIER



SLEEVELESS TOP
16 403 111 0
36-46

**MAXI BRIEF (WITH A LIGHT
SUPPORT FUNCTION)**
16 160 111 0
36-50



WITH INSIDE
BUSTIER

BUSTIER
16 520 111 0
36-44

JAZZ PANT
16 20 111 0
36-46



white 100



black 200



nude 636



COSY

- soft and cosy modal fabric
- modal: highly sustainable fibre of natural origin
- soft, floral lace trimmings
- perfect fit due to high elasticity
- simple romantic look

PACKAGING:

1 piece in a plastic bag with NINA-hangtag



95 %
modal (micro-modal®)

5 %
elastane



STRAP TOP
16 410 584 0
36-48



SLEEVELES TOP
16 400 584 0
36-50

JAZZ PANT
16 20 584 99 | 36-46
3 pieces with stitchcard
(more on page 42)

MAXI BRIEF
16 160 584 99 | 36-50
3 pieces with stitchcard
(more on page 42)



sample of presentation for
3 pieces with a stitchcard



white 100



black 200



champagne 510



nude 636



ROMANCE

- soft and cosy modal fabric
- modal: highly sustainable fibre of natural origin
- floral, expressive lace trimmings
- very soft
- perfect fit due to high elasticity
- romantic look

PACKAGING:

1 piece in a plastic bag with NINA-hangtag



95 % modal
(micro-modal®)
5 % elastane

lace:
80 % polyamide,
20 % elastane



WIREFREE BRA TOP

16 362 648 0
75-85A,B,C, 75-80D

JAZZ PANT

16 20 648 0
36-46



PADDED UNDERWIRE BRA

16 511 648 0
75-90A, 70-90B,C,D



WIREFREE SOFT BRA

16 501 648 0
70-90A,B, 70-85C, 70-80D



SLEEVELESS TOP

16 400 648 0
36-50



TOP

16 410 648 0
36-46

MAXI BRIEF

16 160 648 0
38-50

HIPSTER

16 133 648 0
36-44

JAZZ PANT

16 20 648 0
36-46



NEGLIGEE

16 421 648 0
36-46
90 cm length for all sizes



white 100



black 200



BODY & SOUL

- cosy, elastic micro-modal® rib
- sporty, elegant optics - also suitable as outerwear garment
- extremely reduced pilling tendency due to twisted yarn
- with a decorative soft lace

PACKAGING:
NINA-hangtag



MADE IN EUROPE

95 %
modal (micro-modal®)
5 %
elastane



SHORT SLEEVE SHIRT

60 461 420 0
36-46

LEGGINGS (only in black 200)

60 260 420 0
36-46



SHORT SLEEVE SHIRT

60 461 420 0
36-46



STRAP TOP

60 410 420 0
36-44



SLEEVELESS TOP

60 401 420 0
36-46



SHORT SLEEVE SHIRT

60 461 420 0
36-46

LEGGINGS (only in black 200)

60 260 420 0
36-46



LOW-RISE BRIEF

60 50 420 0
36-44



WAIST BRIEF

60 70 420 0
38-46



MINI HIPSTER

60 133 420 0
36-46



white 100



black 200



PURE

- fine interlock, extremely fine mesh
- delicate like a second skin, nontransparent, with a silky shine
- softer than silk and wonderfully cosy
- climatizing and moisture absorbing
- sustainable micro-modal® made of renewable beechwood
- perfectly comfortable - all day long

PACKAGING:
1 piece in a plastic bag with NINA-
hangtag + Pure-hangtag

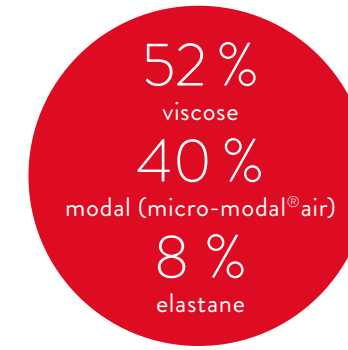


**FABRIC MADE IN GERMANY
MANUFACTURED IN EUROPE**



SLEEVELESS TOP
49 400 111 0
36-50

JAZZ PANT
49 20 111 0
36-46



SLEEVELESS TOP
49 400 111 0
36-50

JAZZ PANT
49 20 111 0
36-46



STRAP TOP
49 410 111 0
36-46

JAZZ PANT
49 20 111 0
36-46



TOP TURTLE NECK
49 391 111 0
36-46

WAIST BRIEF
49 160 111 0
38-50



white 100



black 200



champagne 510



latte macchiato 655



MOTION

- 1x1 rib, 20s gauge
- micro-modal® - the supersoft fibre made of 100 % cellulose
- without side seams
- updated styles with finer finishing
- dimensionally stable due to spandex content

PACKAGING:
NINA-hangtag



**FABRIC MADE IN GERMANY
MANUFACTURED IN EUROPE**

95 %
modal (micro-modal®)
5 %
elastane



STRAP TOP
88 310 111 0
38-46

JAZZ PANT
88 20 111 0
38-46



STRAP TOP
88 310 111 0
38-46



SLEEVELESS TOP
88 300 111 0
38-46



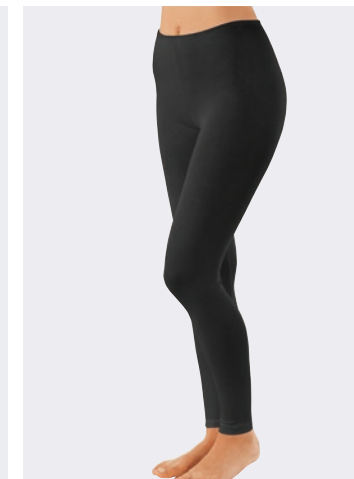
SHORT SLEEVE SHIRT
88 460 111 0
38-46



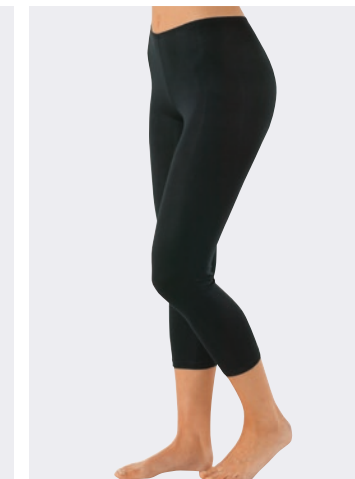
LONG SLEEVE SHIRT
88 470 111 0
38-46



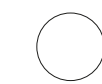
WAIST BRIEF
88 70 111 0
38-46



LEGGINGS
88 260 111 0
38-50
(only in black 200)



CAPRI LEGGINGS
88 261 111 0
38-50
(only in black 200)



white 100



black 200



SILVER EDITION

- single, 40s gauge, extremely fine mesh
- high-quality, attractive lingerie made with a delicate, floral patterned Sticktex-Lace
- soft, enjoyable touch, perfect fit and wearing comfort
- easy-care and shape-retaining, also after many washings
- Shorts with fabric lining in the trunk parts, soft shaping
- strap top with adjustable straps
- negligee with adjustable straps and opaque lining at the lace cups
- The breathable spacer bra fits smoothly and provides optimal and comfortable support up to cup E

PACKAGING:

1 piece in a plastic bag with NINA-hangtag



86 %
polyamide
(microfibre),
14 % elastane

lace:
86 % polyamide,
14 % elastane

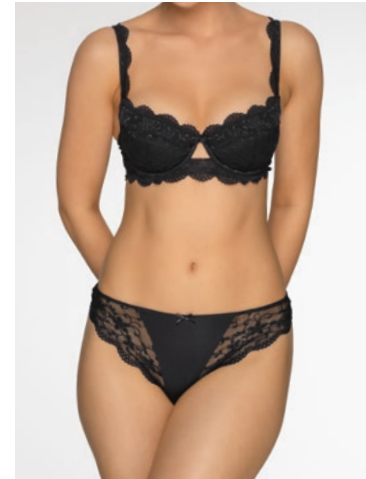


DÉCOLLETE UNDERWIRE BRA

48 515 971 0
70-95A, 70-100B,C,D
70-95E, 70-90F
70-85 G (delivered 01.04.20)

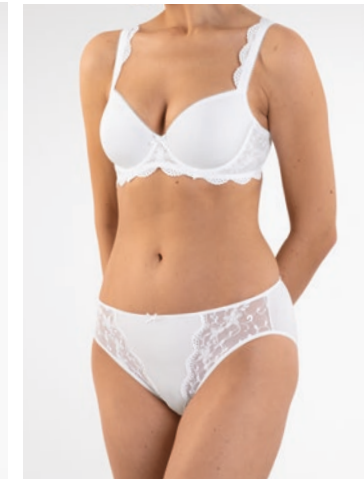
THONG

48 101 971 0
36-44



DÉCOLLETE UNDERWIRE BRA

48 515 971 0
70-95A, 70-100B,C,D
70-95E, 70-90F, 70-85 G



SPACER BRA

48 527 971 0
75-95B,C, 75-90D, 75-85E



UNDERWIRE BRA

48 512 971 0
75-90B,C,D, 75-85E



BRA, PARTIALLY PADDED*

48 513 971 0
75-90B,C,D



DÉCOLLETE UNDERWIRE BRA

48 516 971 0
70-90A, 70-95B,C,D, 70-90E



BRA TOP WITH SPACER CUPS

48 377 971 0
75-95B,C, 75-90D, 75-85E



NEGLIGEE

48 422 971 0
36-46
90 cm length for all sizes
(only in black 200)

LACE SHORTS

48 210 971 0
36-46



white 100



black 200



champagne 510

* 48 513 971 0 only in white + black



MILLEFLEURS

- fine interlock, extremely fine mesh, soft, cuddly, air-conditioning
- skin-friendly modal blend with shiny viscose
- expressive, super-textronic lace with floral design and soft-touch
- moulded underwire bra without seam in the lace cup
- maxi brief with a wide, comfortable lace waistband
- long pants with anti chafing effect
- The breathable spacer bra fits smoothly and provides optimal and comfortable support up to cup E

PACKAGING:
NINA-hangtag
49 410 444 0: in a plastic bag



**FABRIC MADE IN GERMANY
MANUFACTURED IN EUROPE**

52 % viscose
40 % modal
(micro-modal®air)
8 % elastane
lace:
85 % polyamide,
15 % elastane

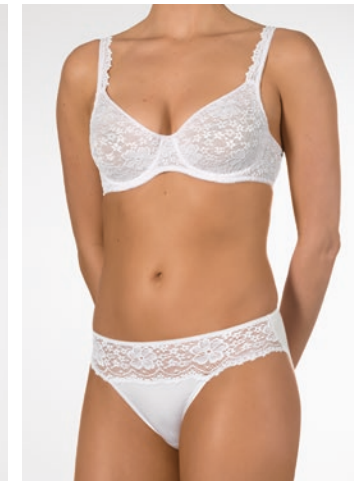


WIREFREE SOFT BRA
49 500 444 0
75-90A,B,C

HIPSTER
49 133 444 0
36-46



WIREFREE SOFT BRA
49 500 444 0
75-90A,B,C



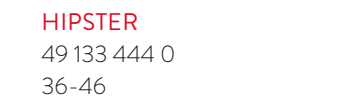
MOLDED WIRE BRA
49 509 444 0
75-90B,C,D



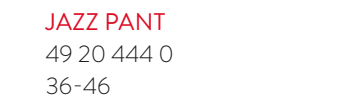
SPACER BRA
49 518 444 0
75-90B,C,D,E



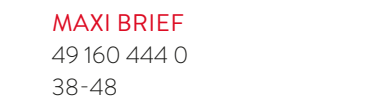
UNDERWIRE BRA TOP
49 360 444 0
75-90B,C,D



HIPSTER
49 133 444 0
36-46



JAZZ PANT
49 20 444 0
36-46



MAXI BRIEF
49 160 444 0
38-48



TOP
49 410 444 0
38-46



TOP
49 400 444 0
38-50



LONG PANTS
49 210 444 0
38-48



white 100



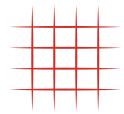
black 200



champagne 510



latte macchiato 655
(all except: wirefree soft
bra, hipster, bra top)



ELEGANCE

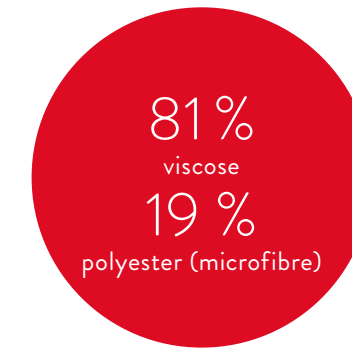
- fine interlock, 42s gauge
- shiny viscose, soft and fluid like silk, comes up to highest expectations
- best wearing comfort and improved wash resistance, due to microfibre content
- fine finishings
- ideal under transparent clothing or under coarse-knit pullovers
- the long slipdress with adjustable straps is perfect under midi and maxi dresses

PACKAGING:

1 piece in a plastic bag with NINA-hangtag



FABRIC MADE IN GERMANY
MANUFACTURED IN EUROPE



NEGLIGEE

22 422 111 0

36-50

(white 100 | black 200)

length: 90 cm for all sizes



SLEEVELESS TOP

22 400 112 0

38-50



TOP

22 480 351 0

38-50

(white 100 | black 200 |
champagne 510)



BODYDRESS

22 404 111 0

38-50

length: 90 cm for all sizes



BODYDRESS

22 406 111 0

38-50

length: 101 cm for all sizes



NEGLIGEE

22 423 111 0

36-50

length: 120 cm for all sizes



WAIST SLIP

22 271 111 0

36-46

length: 40 cm for all sizes



WAIST SLIP

22 272 111 0

36-50

length: 50 cm for all sizes



WAIST SLIP

22 270 111 0

36-50

length: 60 cm for all sizes



white 100



black 200



champagne 510



caramel 635



FINE COTTON

- 1x1 rib, 20s gauge
- superfine, knitted fabric from 100 % organic long-staple cotton - meets highest expectations
- tops with especially flat seams
- arm and neck lining made of a very soft, fine satin
- stays white after washing
- no side seams due to circular knit

PACKAGING:
NINA-hangtag
MINIMUM ORDER QUANTITY:
3 pieces per size



FABRIC MADE IN GERMANY
MANUFACTURED IN EUROPE

100 %
organic cotton,
super combed
lace:
91 % polyamide,
9 % elastane



SLEEVELESS TOP*
70 300 499 0
38-50

MAXI BRIEF*
70 160 499 0
38-50



SLEEVELESS BLAZER SHIRT
70 390 499 0
38-46



STRAP TOP (GOTS)
70 310 224 0
38-46
(white 100)



STRAP TOP (GOTS)
70 350 221 0
38-46
(white 100)



TOP (GOTS)
70 380 225 0
38-46
(white 100)



SLEEVELESS TOP*
70 300 499 0
38-50

MAXI BRIEF*
70 160 499 0
38-50



SLEEVELESS TOP (GOTS)
70 300 220 0
38-50
(white 100)

MAXI BRIEF (GOTS)
70 160 219 0
38-50
(white 100)



SLEEVELESS TOP (GOTS)
70 300 223 0
38-50
(white 100)

JAZZ PANT (GOTS)
70 20 222 0
38-46
(white 100)



white 100



black 200



champagne 510



* night blue 742



FINE COTTON

- 1x1 rib, 20er gauge
- tops with particularly flat hem
- arm and neck lining finished with a very soft, fine satin
- stays white after washing
- superfine, knitted fabric of 100% fine, long-staple cotton for highest requirements
- no side seams due to circular knit
- all items produced according to GOTS standard

PACKAGING:
NINA-hangtag and label
MINIMUM ORDER QUANTITY:
3 pieces per size and colour



**FABRIC MADE IN GERMANY
MANUFACTURED IN EUROPE**



STRAP TOP (GOTS)
70 310 111 0
38-46



SLEEVELESS TOP (GOTS)
70 302 111 0
38-54



SLEEVELESS SHIRT (GOTS)
70 391 111 0
38-50



SHORT SLEEVE SHIRT (GOTS)
70 461 111 0
38-50



LONG SLEEVE SHIRT (GOTS)
70 471 111 0
38-50



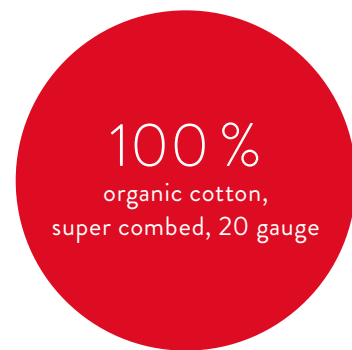
JAZZ PANT (GOTS)
70 20 111 0
38-46



WAIST BRIEF (GOTS)
70 70 111 0
38-50



MAXI BRIEF (GOTS)
70 160 111 0
38-54



white 100



black 200



SIMPLY

- cuddly basic quality made of cotton/modal/elastane
- skin-friendly with high wearing comfort
- fabric is highly elastic and therefore has a perfect fit
- no side seams due to circular knit
- delicate, elastic lace ends

PACKAGING:
1 piece in a plastic bag with NINA-hangtag
MINIMUM ORDER QUANTITY:
3 pieces per size and colour



**FABRIC MADE IN GERMANY
MANUFACTURED IN EUROPE**



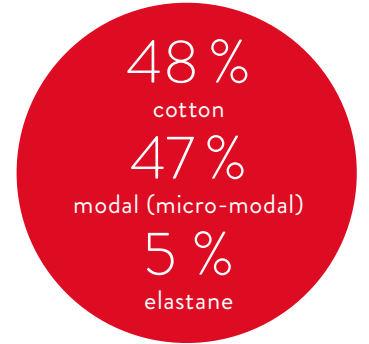
STRAP TOP
74 350 950 0
36-48



SLEEVELESS TOP
74 300 950 0
36-48

JAZZ PANT
74 20 950 0
36-48

MAXI BRIEF
74 160 950 0
36-48



white 100



black 200



DAILY

- 1x1 rib, 20er gauge
- shirts: arm and neck lining finished with a very soft, fine satin
- especially long-lasting fabric
- best price-value ratio

PACKAGING:
3 pieces in a bundle
MINIMUM ORDER QUANTITY:
3 pieces per size and colour



FABRIC MADE IN GERMANY
MANUFACTURED IN EUROPE



STRAP TOP
77 310 218 0
38-46



STRAP TOP
77 310 869 0
38-46
(only in white 100)



SLEEVELESS TOP
77 300 866 0 | 38-50
(only in white 100)
same top with longer back part:
77 305 867 0 | 38-54



MIDDLE STRAP TOP
77 350 870 0
38-50
(only in white 100)



SLEEVELESS TOP
77 300 217 0
38-50



white 100



black 200



STRAP TOP
77 310 114 0
36-46



SLEEVELESS TOP
77 302 114 0
36-50



WIREFREE BRA TOP
77 372 111 0
38-46
(only in white 100)



SLEEVELESS TOP WITH LONGER BACK PART
77 305 111 0
38-54
(only in white 100 & black 200)



JAZZ PANT
77 20 111 0
36-46



WAIST BRIEF
77 70 111 0
38-50



MAXI BRIEF
77 10 111 0
38-52
(only in white 100)



SHORT
77 120 111 0
38-52
(only in white 100)



LONG PANTS
77 210 111 0
40-52
(only in white 100)



white 100



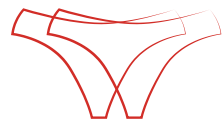
black 200



champagne 510



nude 636



MULTIPLE PACKS

- soft touch
- perfect fit
- easy care and shape-retaining

PACKAGING:
3 pieces with a stitchcard
MINIMUM ORDER QUANTITY:
3 pieces per size and colour



Matching shirts are available on page 21.



jazz pant
16 20 584 99 | 36-46
95% modal (micro-modal),
5% elastane
(white | black | champagne | nude)
3 pieces with stitchcard



MAXI BRIEF
16 160 584 99 | 36-50
95% modal (micro-modal),
5% elastane
(white | black | champagne | nude)
3 pieces with stitchcard



sample of presentation for
3 pieces with a stitchcard



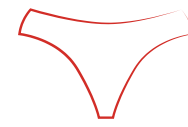
JAZZ PANT
16 20 722 99 | 36-46
95% modal (micro-modal),
5% elastane
(white | black | nude)
3 pieces with stitchcard



MAXI BRIEF
16 160 722 99 | 38-50
95% modal (micro-modal),
5% elastane
(white | black | nude)
3 pieces with stitchcard



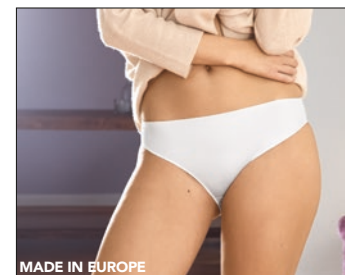
sample of presentation for
3 pieces with a stitchcard



SLIPPOINT

- soft and cosy fabric
- perfect fit
- high quality
- delivered on hangers, makes it easy to hang on the slippoint presenter

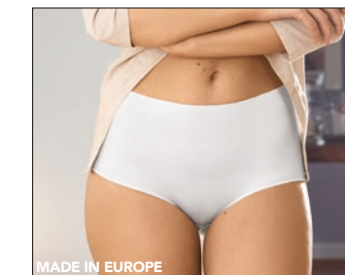
PACKAGING:
on a NINA-hanger
MINIMUM ORDER QUANTITY:
3 pieces per size and colour



JAZZ PANT
65 20 112 99 | 36-46
66% polyamide, 34% elastane
(white | black | nude)
**2 pieces on a hanger with
stitchcard**



HIPSTER
65 130 112 99 | 36-46
66% polyamide, 34% elastane
(white | black | nude)
**2 pieces on a hanger with
stitchcard**



MAXI BRIEF
65 160 112 99 | 36-48
66% polyamide, 34% elastane
(white | black | nude)
**2 pieces on a hanger with
stitchcard**



Example for 2 pieces on a
hanger with stitchcard



**WAIST BRIEF,
TERRY CROTCH LINING**
65 70 811 0 | 36-46
66% polyamide, 34% elastane
lace: 86% polyamide, 14% elastane
(white | black)
1 piece on a hanger with hangtag



back



**JAZZ PANT,
TERRY CROTCH LINING**
40 20 809 0 | 36-46
93% cotton, 7% elastane
(white | black)
1 pieces on a hanger with hangtag



**MAXI BRIEF,
TERRY CROTCH LINING**
40 160 809 0 | 38-50
93% cotton, 7% elastane
(white | black)
1 pieces on a hanger with hangtag



white 100



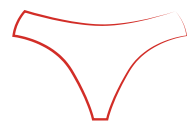
black 200



champagne 510



nude 636



SLIPBOUTIQUE

- especially skin friendly thanks to cotton
- soft touch and perfect fit
- easy care and shape-retaining

PACKAGING:

3 pieces in a bundle with sticker

40...880: 3 pieces with hang tag

MINIMUM ORDER QUANTITY:

3 pieces per size and colour



JAZZ PANT
82 20 812 0 | 36-46
47% modal, 47% cotton,
6% elastane
(only in white)



MAXI BRIEF
82 160 812 0 | 36-50
47% modal, 47% cotton,
6% elastane
(only in white)



**JAZZ PANT, COMFORT
WAISTBAND**
40 20 810 0 | 36/38-44/46
95% cotton, 5% elastane
(only in white)



**MAXI BRIEF, COMFORT WAIST-
BAND**
40 160 810 0 | 36/38-48/50
95% cotton, 5% elastane
(only in white)



LOW-RISE BRIEF
40 50 880 0 | 36-46
93% cotton, 7% elastane
(white | black | champagne)



HIPSTER
40 130 880 0 | 36-46
86% polyamide, 14% elastane
(white | black | champagne)



WAIST BRIEF
40 70 880 0 | 38-46
93% cotton, 7% elastane
(white | black | champagne)



MAXI BRIEF
40 160 880 0 | 38-50
93% cotton, 7% elastane
(white | black | champagne)



JAZZ PANT
40 20 122 0 | 36-50
3 pieces in a bundle
93% cotton, 7% elastane
(white | black | nude)

40 20 122 99 | 38-48
**2 pieces on a hanger with a
stitchcard**



LOW-RISE BRIEF
40 50 122 0 | 36-46
93% cotton, 7% elastane
(white | black | nude)



HIPSTER
40 133 122 0 | 36-46
93% cotton, 7% elastane
(white | black | nude)



MAXI BRIEF
40 160 122 0 | 38-56
3 pieces in a bundle
93% cotton, 7% elastane
(white | black | nude)

40 160 122 99 | 38-50
**2 pieces on a hanger with a
stitchcard**



JAZZ PANT
40 20 374 0 | 36-46
93% cotton, 7% elastane
(white | black | nude)



WAIST BRIEF
40 70 374 0 | 36-46
93% cotton, 7% elastane
(white | black | nude)



MAXI BRIEF
40 160 374 0 | 36-50
93% cotton, 7% elastane
(white | black | nude)



JAZZ PANT
70 23 113 0 | 38-46
100% cotton
(white | black | champagne)



MIDI BRIEF
70 53 113 0 | 38-46
100% cotton
(white | black | champagne)



MAXI BRIEF
70 160 113 0 | 38-50
100% cotton
(white | black | champagne)



LOW-RISE BRIEF
43 50 111 0 | 38-46
95% cotton, 5% elastane
(only in white)



WAIST BRIEF
43 70 111 0 | 38-50
95% cotton, 5% elastane
(only in white)



MAXI BRIEF
43 160 111 0 | 38-50
95% cotton, 5% elastane
(only in white)



LOW-RISE BRIEF
433 50 119 0 | 38-44
93% cotton, 7% elastane
(only in white)



WAIST BRIEF
433 70 119 0 | 38-48
93% cotton, 7% elastane
(only in white)



MAXI BRIEF
433 160 119 0 | 38-50
93% cotton, 7% elastane
(only in white)



white 100



black 200



champagne 510



nude 636

INDEX BASIC CATALOGUE

ADVERTISING MATERIALS

article	page	article	page	article	page
15 20 112 0	9	40 50 122 0	44	70 20 222 0	37
15 55 112 0	9	40 50 880 0	44	70 23 113 0	45
15 100 112 0	9	40 70 374 0	45	70 53 113 0	45
15 130 112 0	8	40 70 880 0	44	70 70 111 0	38
15 136 112 0	9	40 130 880 0	44	70 160 111 0	38
15 160 112 0	9	40 133 122 0	44	70 160 113 0	45
15 361 112 0	9	40 160 122 0	44	70 160 219 0	37
15 405 112 0	9	40 160 122 99	44	70 160 499 0	37
16 20 111 0	19	40 160 374 0	45	70 300 220 0	37
16 20 584 99	42	40 160 809 0	43	70 300 223 0	37
16 20 648 0	23	40 160 810 0	44	70 300 499 0	37
16 20 722 99	42	40 160 880 0	44	70 302 111 0	38
16 133 648 0	23	43 50 111 0	45	70 310 111 0	38
16 160 111 0	19	43 70 111 0	45	70 310 224 0	37
16 160 584 99	42	43 160 111 0	45	70 350 221 0	37
16 160 648 0	23	45 120 951 0	15	70 380 225 0	37
16 160 722 99	42	45 160 112 0	14	70 391 111 0	38
16 250 874 0	7	46 160 951 0	15	70 390 499 0	37
16 261 874 0	7	45 181 112 0	15	70 461 111 0	38
16 263 874 0	7	45 180 951 0	15	70 471 111 0	38
16 265 874 0	7	45 220 112 0	15	74 20 950 0	39
16 266 874 0	7	45 400 112 0	15	74 160 950 0	39
16 400 584 0	21	45 400 951 0	15	74 300 950 0	39
16 400 648 0	23	45 520 112 0	14	74 350 950 0	39
16 400 874 0	7	45 520 951 0	15	77 10 111 0	41
16 403 111 0	19	48 21 971 0	31	77 20 111 0	41
16 410 584 0	21	48 101 971 0	30	77 20 216 0	40
16 410 648 0	23	48 130 971 0	31	77 20 868 0	40
16 421 648 0	23	48 136 971 0	31	77 30 865 0	40
16 460 874 0	7	48 210 971 0	31	77 70 111 0	41
16 470 874 0	7	48 377 971 0	31	77 120 111 0	41
16 501 648 0	23	48 422 971 0	31	77 210 111 0	41
16 511 648 0	23	48 512 971 0	31	77 300 217 0	40
16 520 111 0	18	48 513 971 0	31	77 302 114 0	41
22 270 111 0	35	48 515 971 0	30	77 305 111 0	41
22 271 111 0	35	48 516 971 0	31	77 310 114 0	41
22 272 111 0	35	48 527 971 0	31	77 310 218 0	40
22 400 112 0	35	49 20 111 0	26	77 310 869 0	40
22 404 111 0	35	49 20 444 0	33	77 350 870 0	40
22 406 111 0	35	49 133 444 0	32	77 372 111 0	41
22 422 111 0	34	49 160 111 0	27	82 20 812 0	44
22 423 111 0	35	49 160 444 0	33	88 20 111 0	29
22 480 351 0	35	49 210 444 0	33	88 70 111 0	29
25 20 111 0	12	49 360 444 0	33	88 260 111 0	29
25 160 111 0	13	49 391 111 0	27	88 261 111 0	29
25 400 111 0	12	49 400 111 0	26	88 300 111 0	29
25 501 111 0	13	49 400 444 0	33	88 310 111 0	29
25 514 111 0	13	49 410 111 0	27	88 460 111 0	29
25 520 111 0	13	49 410 444 0	33	88 470 111 0	29
29 60 846 0	17	49 500 444 0	32	91 50 113 0	11
29 120 846 0	17	49 509 444 0	33	91 100 113 0	11
29 220 846 0	17	49 518 444 0	33	91 130 113 0	11
29 260 111 0	16	60 50 420 0	25	91 133 113 0	10
29 300 846 0	17	60 70 420 0	25	91 160 113 0	11
29 460 846 0	17	60 133 420 0	25	91 220 113 0	11
29 470 846 0	16	60 260 420 0	24	91 260 113 0	11
40 20 122 0	44	60 401 420 0	25	98 360 112 0	11
40 20 122 99	44	60 410 420 0	25	98 520 112 0	11
40 20 374 0	45	60 461 420 0	24	433 50 119 0	45
40 20 809 0	43	65 20 112 99	43	433 70 119 0	45
40 20 810 0	44	65 130 112 99	43	433 160 119 0	45
		65 70 811 0	43		
		70 20 111 0	38		



4-1-69-0 collection poster DIN A1
ROMANCE



4-1-43-0 collection poster DIN A1
SILVER EDITION

With just a few clicks to the content! 

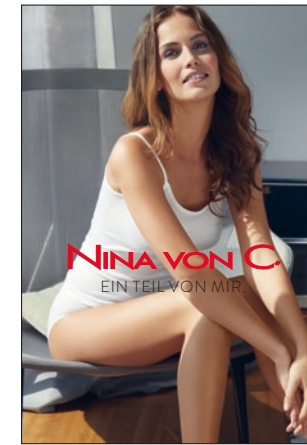
1. Visit website: www.fashion.cloud
2. Register as a retailer for free
3. Request access to our brands
4. Simply download content

We provide for you:

- logos
- visuals
- videos
- catalogues
- promotional material
- product feed for your digital management



4-1-37-0 collection poster DIN A1
Loungewear



4-1-55-0 collection poster DIN A1
MOTION



4-1-38-0 collection poster DIN A1
MILLEFLEURS



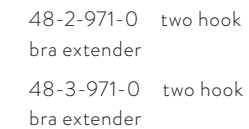
4-1-48-0 collection poster DIN A1
COSY



1-23-0-0
plexi-glas display
20 x 12 x 2 cm



1-24-0-0
plexi-glas display
organic cotton
20 x 12 x 2 cm



48-2-971-0 two hook
bra extender
48-3-971-0 two hook
bra extender



1-19-0-0
1-26-0-0
transparent logo sticker, 2 sizes



exceeding an order value
of EUR 500,-
25 pieces free of charge

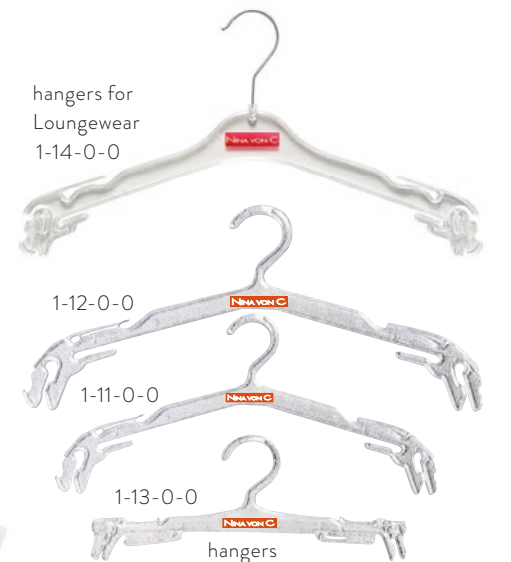
1-9-0-0 paper bag red large (26 x 34 x 12 cm)
1-10-0-0 paper bag red small (18 x 24 x 8 cm)



transparent bra straps
1-16-0-0 narrow = 10 mm
1-17-0-0 wide = 16 mm



1-22-0-0 mesh laundry bag with
zipper, 30 x 40 cm



hangers for
Loungewear
1-14-0-0
1-12-0-0
1-11-0-0
1-13-0-0
hangers

CORPORATE MANAGEMENT

Doris Biedermann
Martina Bandte
Matthias Conzelmann

SALES MANAGEMENT

Peter Lübbe

KEY ACCOUNT MANAGEMENT

Mijo Roscic

EXPORT MANAGEMENT

USA, CDN, MEX, South America,
Africa, South Asia, J, ROK, AUS, NZ,
IS, N, SF, DK, GB, IRL, CZ, SK
Ulrich Karl Conzelmann
E-Mail uconzelmann@conzelmann.de

EXPORT FRANCE

Pascale Müller
E-Mail pmueller@conzelmann.de

CUSTOMER SERVICE

Gabriele Beck
Julia Eppler
Andreas Nill
Elvira Vogt

**SALES REPRESENTATIVES
GERMANY**

Irena Holz
Mobil 0151 12131186
Mail iholz@conzelmann.de

Karoline Krahn
Tel. 0931 32066384
Fax 0931 32066385
Mobil 0171 2608584
Mail info@krahn-fashion.de

Laszlo Pilz
Fax 08152 399249
Mobil 0171 5567007
Mail pilz.ninavonc@gmail.com

Order office Munich (MTC-Center)
House I, Room 035
Taanusstr. 45
80807 München
Appointments after arrangement
by telephone.

Caspar Schruck
Tel. 02151 7843857
Fax 02151 7843858
Mobil 0151 12666698
Mail cschruck@conzelmann.de

Kristian Schulz
Tel. 030 60081117
Fax 030 60975148
Mobil 0172 3241600
Mail kristianschulz@gmx.net

Sebastian Speidel
Mobil 0151 57606750
Mail sspeidel@conzelmann.de

Order office Sindelfingen
House IV, 9. Level
Mahdentalstraße 114
71065 Sindelfingen
Appointments after arrangement
by telephone.

**SALES REPRESENTATIVES
WORLDWIDE****AUSTRIA + BOZEN (IT)**

Gustav Kern
Mobil +43 699 17072213
Mail gustav.kern@aon.at

BELGIUM

Anne Verspeelt
Tel. +32 475 615494
Mail averspeelt@freegates.be

CZECH REPUBLIC+ SLOVAKIA

T.O.A.s.r.o.
Norbert Jesiolowski
A. Bernolaka 56
01001 Zilina

**FRANCE (ALSACE-LORRAINE) +
LUXEMBOURG**

Patrick Landmann
Tel. +33 687 113209
Mail patrick.landmann404@orange.fr

For other regions of France please
contact Mrs. Müller

POLAND

F.H. ADA
Andrzej Pieniak
Tel. +48 501 151899
Mail andrzej.pieniak@galeriabelizny.pl
Web www.galeriabelizny.pl

RUSSIA + CIS + BALTIC STATES

ES marketing & sales UG
Eugen Sabudko
Tel. +49 8234 7081480
Mobil 0151 27001607
E-Mail esabudko@conzelmann.de

SCANDINAVIA

JD Textile
Ivan Jensen
Tel. +45 96420245
Mobil +45 20822452
Mail mail@jd-textile.dk

SWITZERLAND

JANA dessous
Peter Thum
Tel. +41 71 6970660
Fax +41 71 6970664
Mobil +41 79 6591045
Mail jana-dessous@bluewin.ch

Viana AG

Reiherweg 1
CH-9472 Grabs
Tel. +41 81 7712233
Fax +41 81 7712349

THE NETHERLANDS + BELGIUM

Henk Nieuwland Agenturen
Tel. +31 622 204470
Mail henknieuwlandagenturen@gmail.com

Showroom Almere
Cube Fashion Centre C4.14
Veluwezoom 7,
1327 AA Almere, Niederlande

NINA VON C.